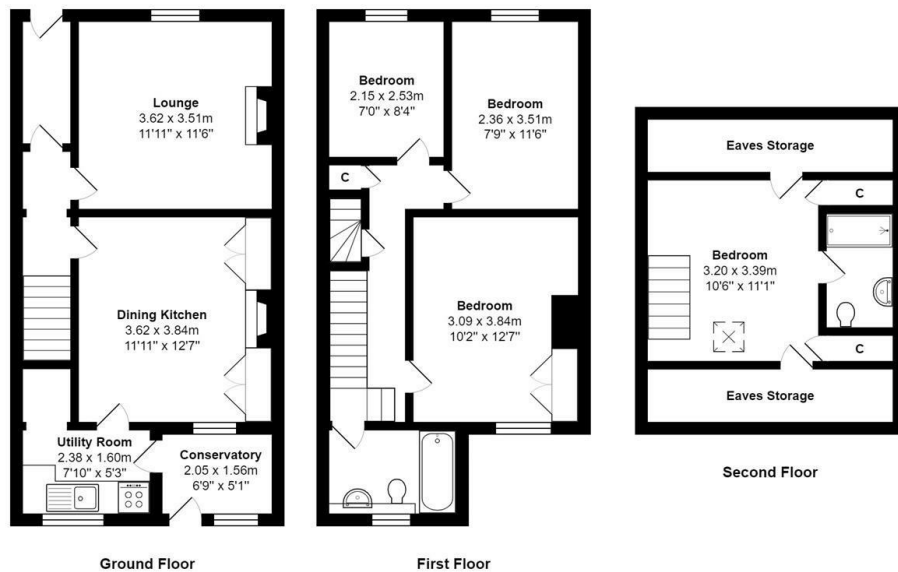




Wharfedene, 25 Linton Falls, Linton, Skipton, BD23 6BQ

£1,250 Per Calendar Month

- Mid Terrace Family Home
- Four Bedrooms
- Garden Room
- Garage
- Close To Grassington and its Amenities
- EPC Rating: E
- Council Tax Band - E
- Tenancy Term - Ask Agent



Total Area: 99.3 m² ... 1069 ft² (excluding eaves storage)
 All measurements are approximate and for display purposes only



Directions

Viewings

Viewings by arrangement only. Call 01535 636238 to make an appointment.

Council Tax Band

E

EPC Rating:

E

Energy Efficiency Rating		
	Current	Potential
Very energy efficient - lower running costs		
(92-plus) A		84
(81-91) B		
(69-80) C		
(55-68) D	53	
(39-54) E		
(21-38) F		
(1-20) G		
Not energy efficient - higher running costs		
England & Wales		EU Directive 2002/91/EC